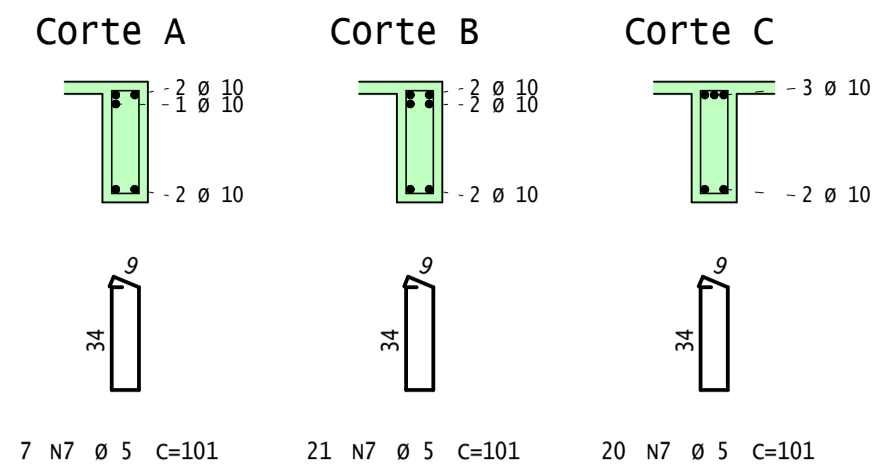
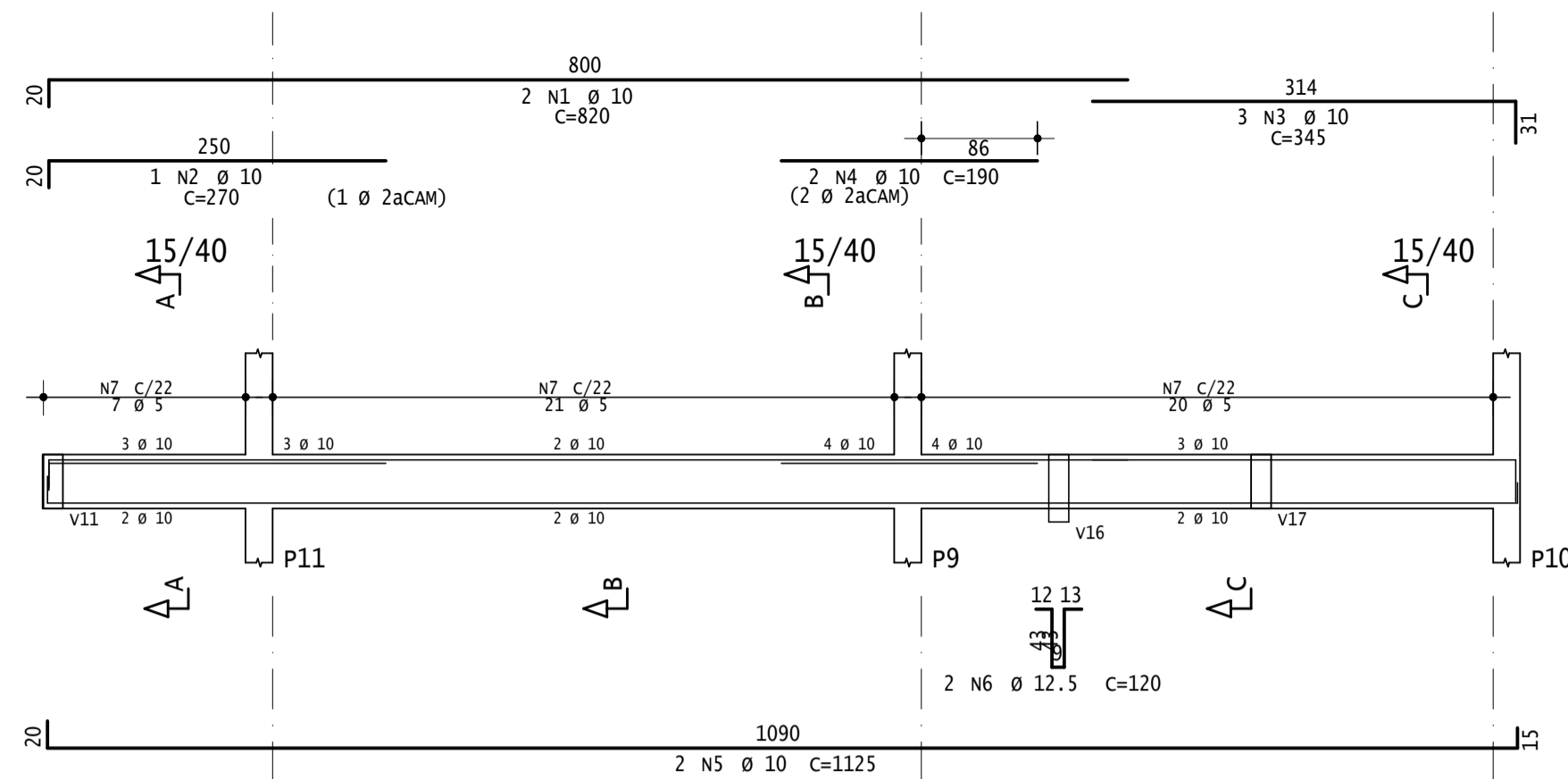
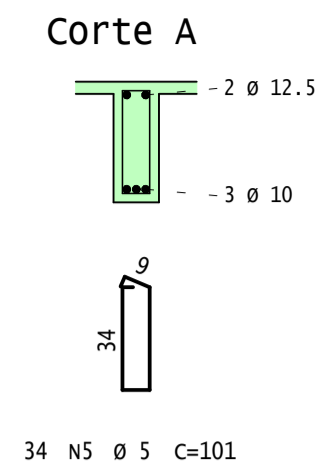
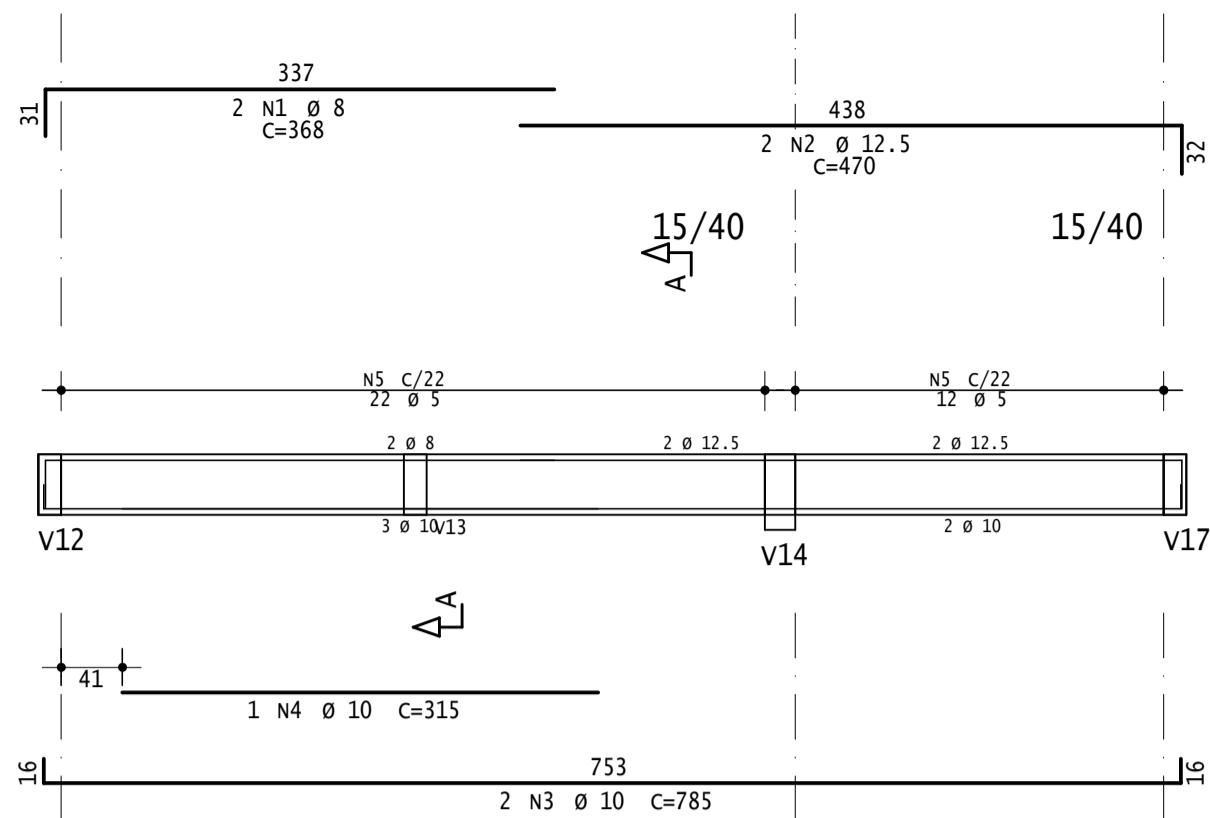


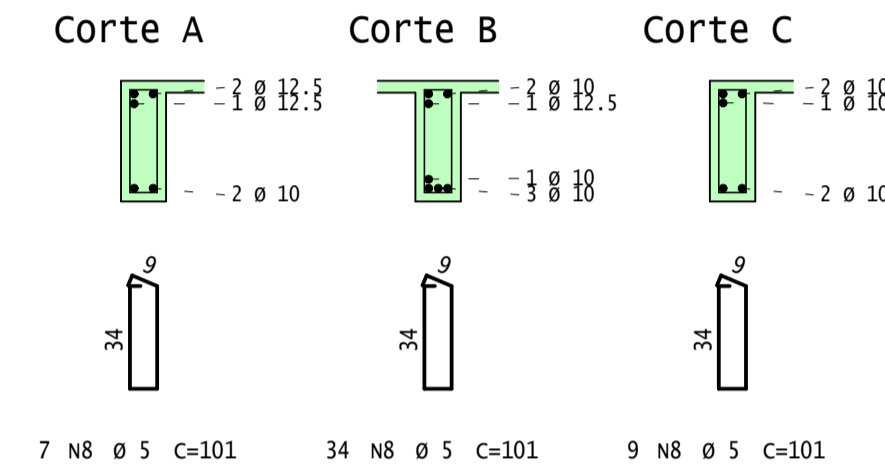
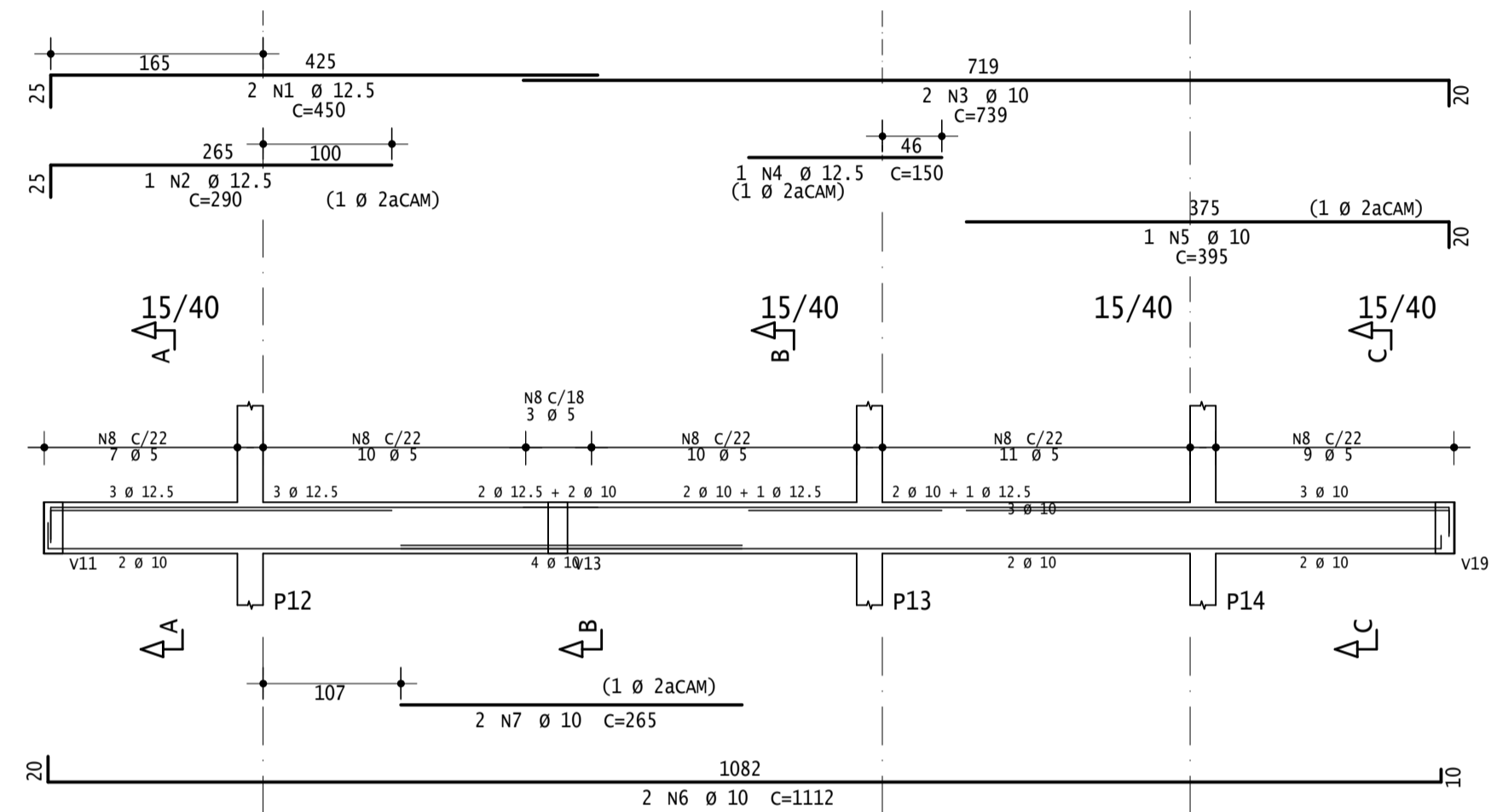
V7



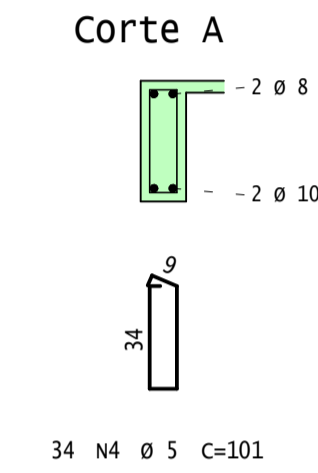
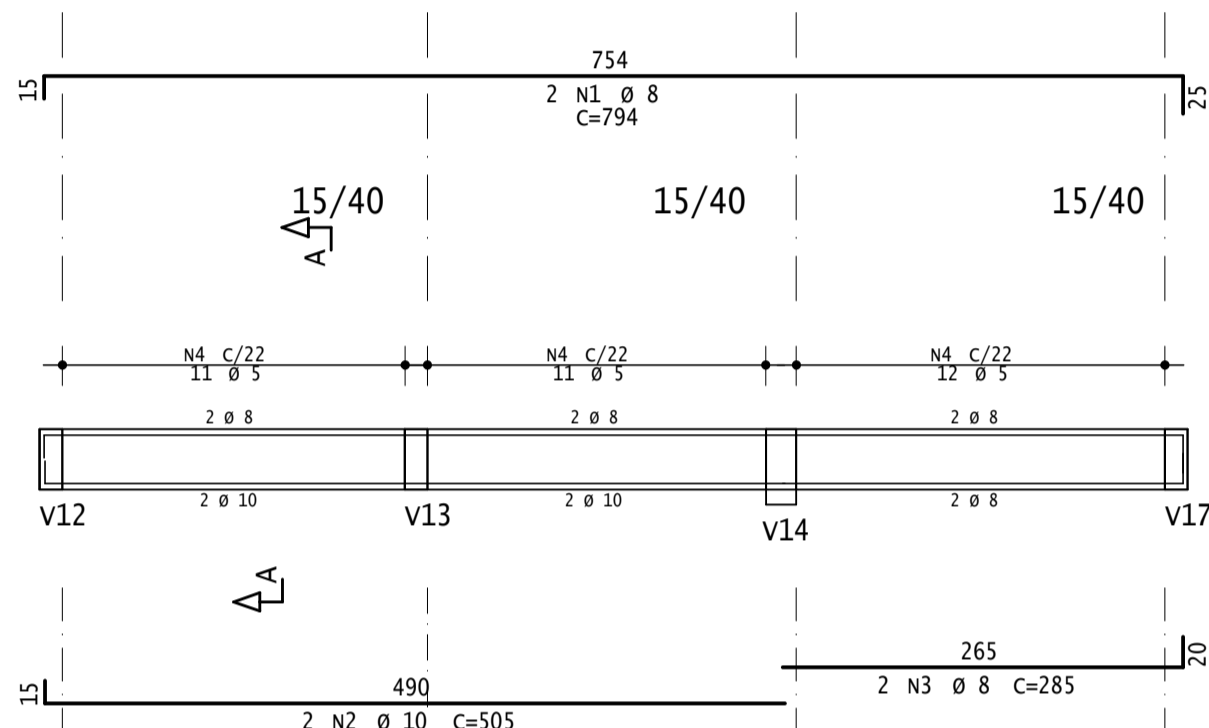
V8



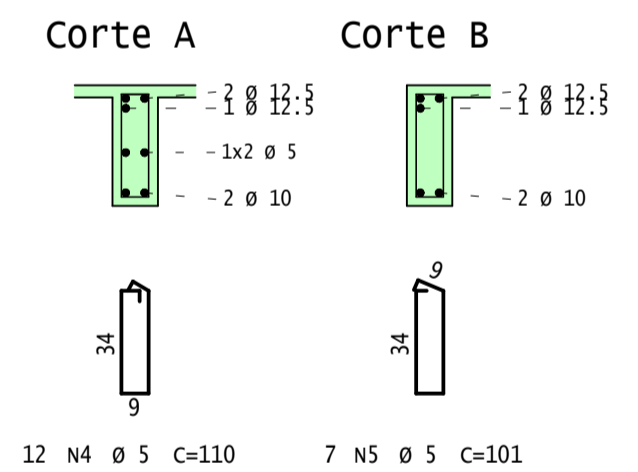
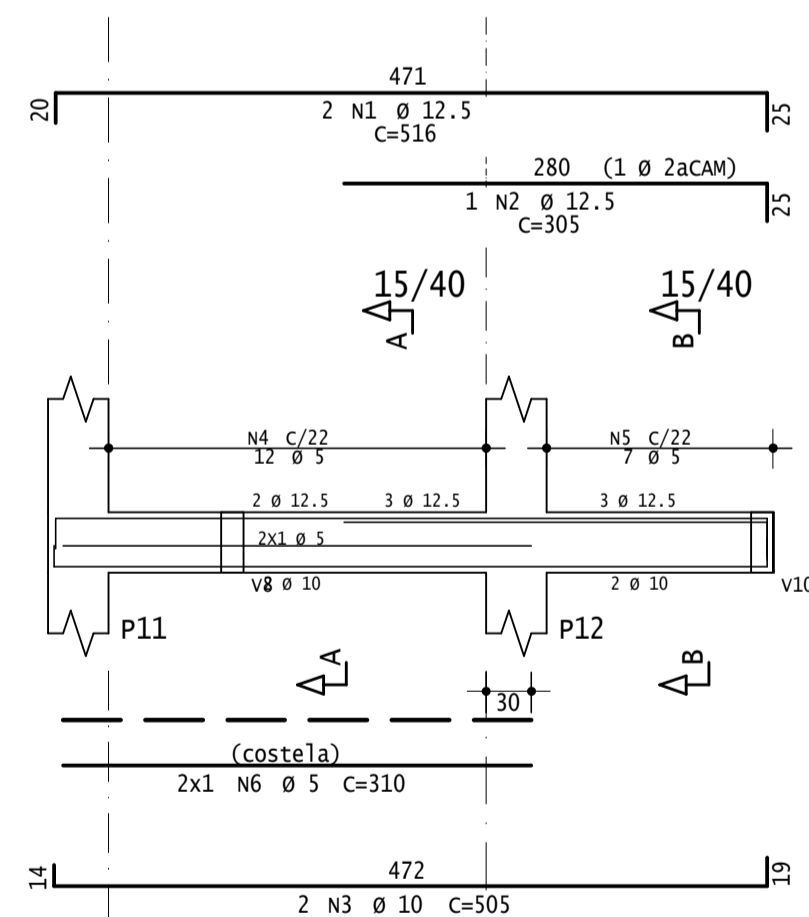
V9



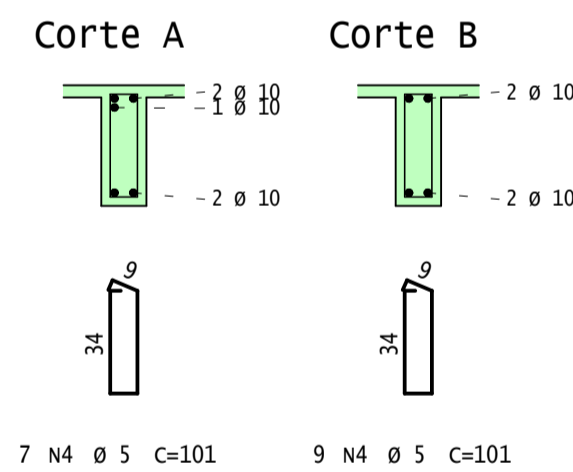
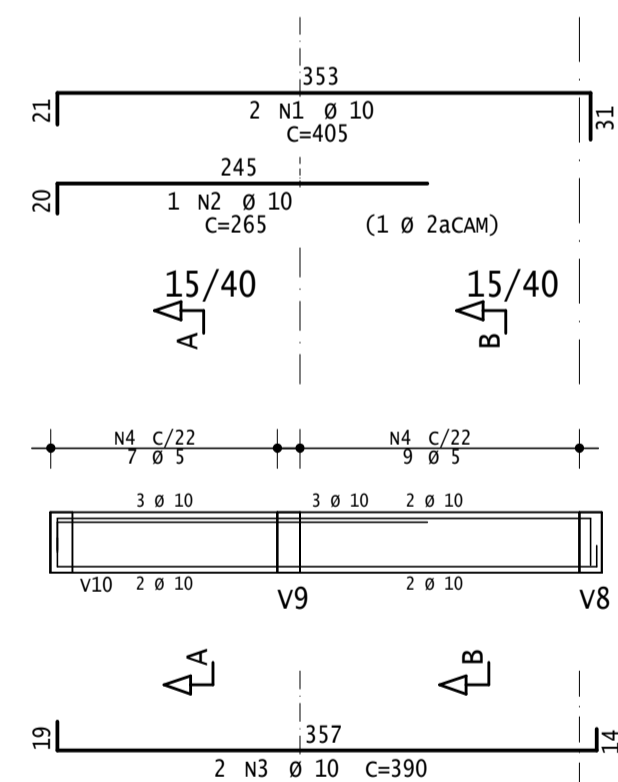
V10



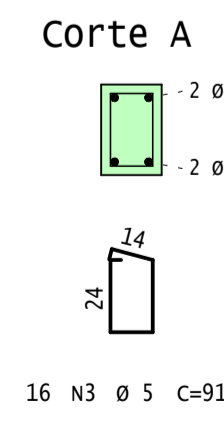
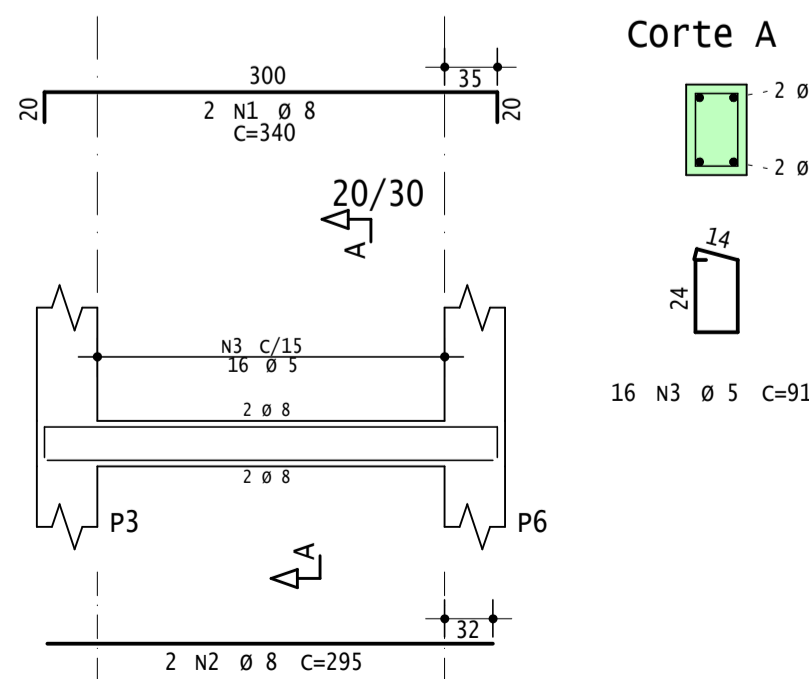
V12



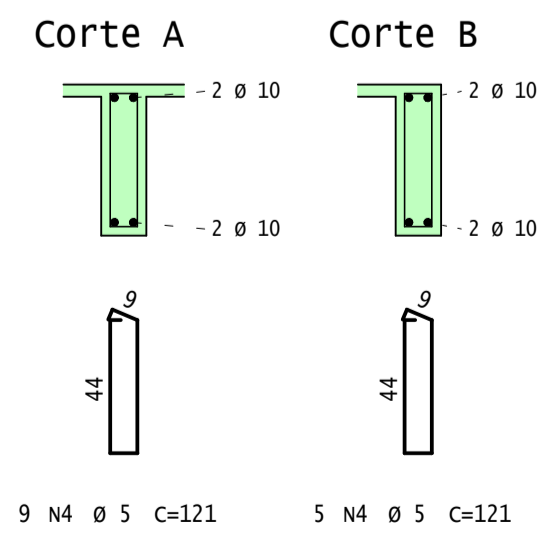
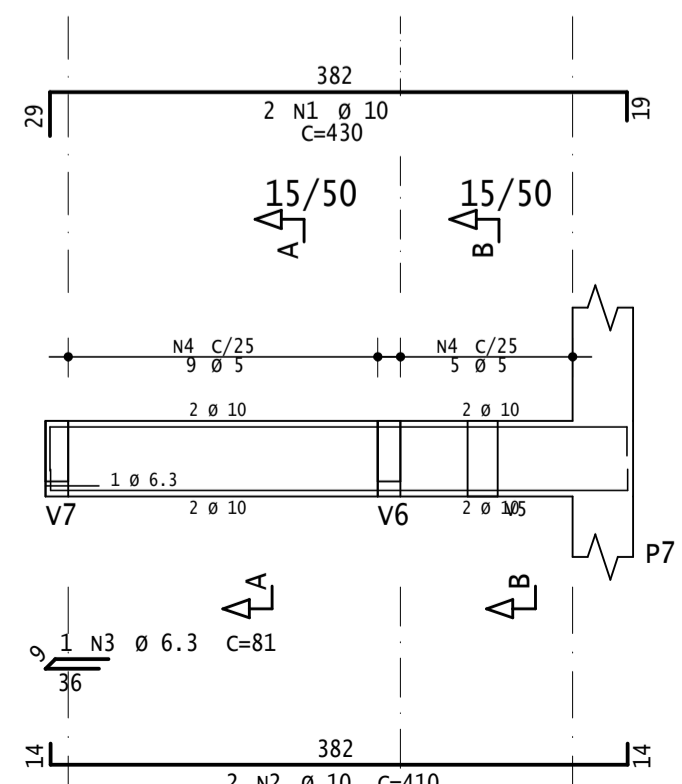
V13



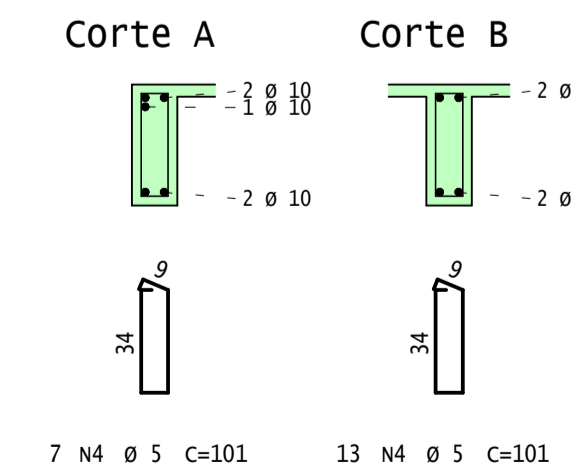
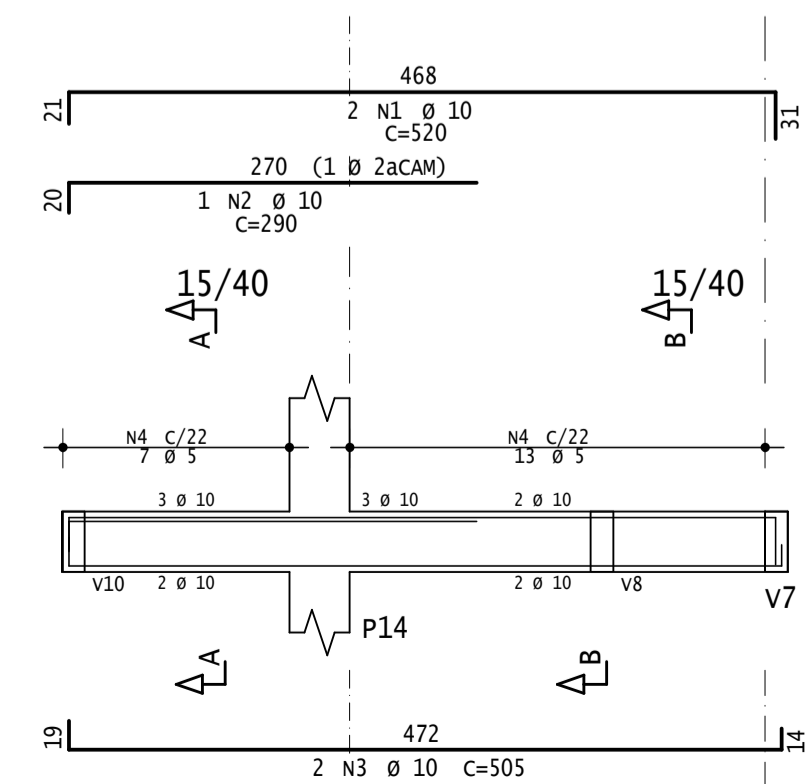
V15



V16



V17



| AÇO | POS | BIT | QUANT | COMPRIMENTO | |
|------------|-----|------|-------|-------------|-------|
| | | | | UNIT | TOTAL |
| | | mm | | cm | cm |
| V7 | | | | | |
| 50A | 1 | 10 | 2 | 820 | 1640 |
| 50A | 2 | 10 | 1 | 270 | 270 |
| 50A | 3 | 10 | 3 | 345 | 1035 |
| 50A | 4 | 10 | 2 | 190 | 380 |
| 50A | 5 | 10 | 2 | 1125 | 2250 |
| 50A | 6 | 12.5 | 2 | 120 | 240 |
| 60A | 7 | 5 | 48 | 101 | 4848 |
| V8 | | | | | |
| 50A | 1 | 8 | 2 | 368 | 736 |
| 50A | 2 | 12.5 | 2 | 470 | 940 |
| 50A | 3 | 10 | 2 | 785 | 1570 |
| 50A | 4 | 10 | 1 | 315 | 315 |
| 60A | 5 | 5 | 34 | 101 | 3434 |
| V9 | | | | | |
| 50A | 1 | 12.5 | 2 | 450 | 900 |
| 50A | 2 | 12.5 | 1 | 290 | 290 |
| 50A | 3 | 10 | 2 | 739 | 1478 |
| 50A | 4 | 12.5 | 1 | 150 | 150 |
| 50A | 5 | 10 | 1 | 395 | 395 |
| 50A | 6 | 10 | 2 | 1112 | 2224 |
| 50A | 7 | 10 | 2 | 265 | 530 |
| 60A | 8 | 5 | 50 | 101 | 5050 |
| V10 | | | | | |
| 50A | 1 | 8 | 2 | 794 | 1588 |
| 50A | 2 | 10 | 2 | 505 | 1010 |
| 50A | 3 | 8 | 2 | 285 | 570 |
| 60A | 4 | 5 | 34 | 101 | 3434 |
| V12 | | | | | |
| 50A | 1 | 12.5 | 2 | 516 | 1032 |
| 50A | 2 | 12.5 | 1 | 305 | 305 |
| 50A | 3 | 10 | 2 | 505 | 1010 |
| 60A | 4 | 5 | 12 | 110 | 1320 |
| 60A | 5 | 5 | 7 | 101 | 707 |
| 60A | 6 | 5 | 2 | 310 | 620 |
| V13 | | | | | |
| 50A | 1 | 10 | 2 | 405 | 810 |
| 50A | 2 | 10 | 1 | 265 | 265 |
| 50A | 3 | 10 | 2 | 390 | 780 |
| 60A | 4 | 5 | 16 | 101 | 1616 |
| V15 | | | | | |
| 50A | 1 | 8 | 2 | 340 | 680 |
| 50A | 2 | 8 | 2 | 295 | 590 |
| 60A | 3 | 5 | 16 | 91 | 1456 |
| V16 | | | | | |
| 50A | 1 | 10 | 2 | 430 | 860 |
| 50A | 2 | 10 | 2 | 410 | 820 |
| 60A | 3 | 6.3 | 1 | 81 | 81 |
| 60A | 4 | 5 | 14 | 121 | 1694 |
| V17 | | | | | |
| 50A | 1 | 10 | 2 | 520 | 1040 |
| 50A | 2 | 10 | 1 | 290 | 290 |
| 50A | 3 | 10 | 2 | 505 | 1010 |
| 60A | 4 | 5 | 20 | 101 | 2020 |

| RESUMO DE AÇO | | | |
|---------------|------|-------|---------|
| AÇO | BIT | COMPR | PESO |
| | | m | kgf |
| 60A | 5 | 262 | 40 |
| 50A | 6.3 | 1 | 0 |
| 50A | 8 | 42 | 16 |
| 50A | 10 | 200 | 123 |
| 50A | 12.5 | 39 | 37 |
| Peso Total | | 60A = | 40 kgf |
| Peso Total | | 50A = | 177 kgf |

B-ENG CONSTRUTORA

| | |
|--|---|
| CONCRETO f _{ck} = 25 MPa ECS = 24150 MPa CLIENTE PREFEITURA DE NOVA ESPERANÇA DO SUDOESTE OBRA ESTADIO MUNICIPAL TÍTULO DET. VIGAS PRIMEIRO PVT0 2/2 | OBRA N.º 0001 REV. N.º 00 |
| v7 / v8 / v9 / v10 / v12 v13 / v15 / v16 / v17 | DATA 27/10/2023 ESCALA 1:50 PROJETO EST-PR1-VIG-005-R00 COORD. ENG.º GUILHERME DIESEN |