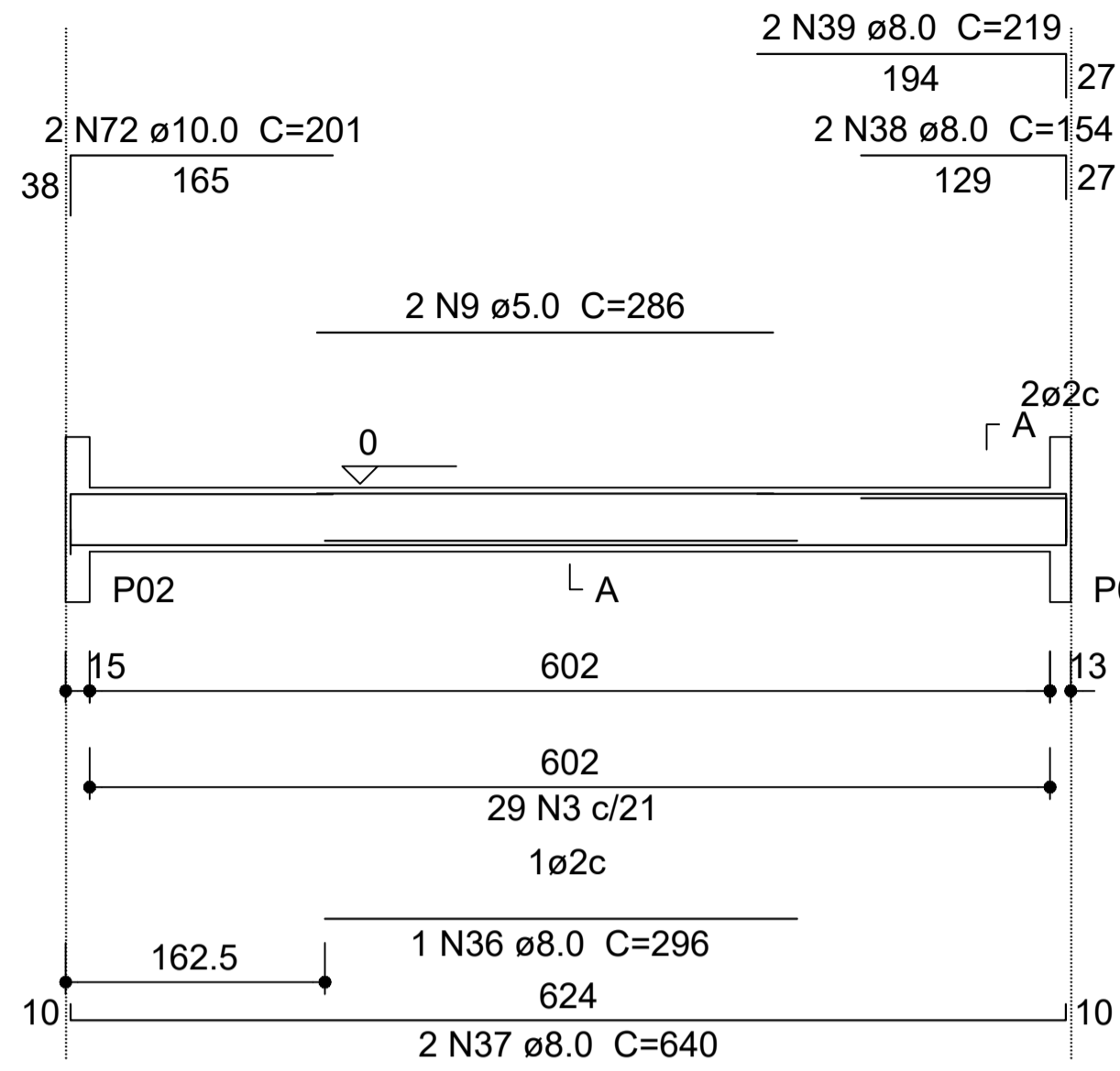
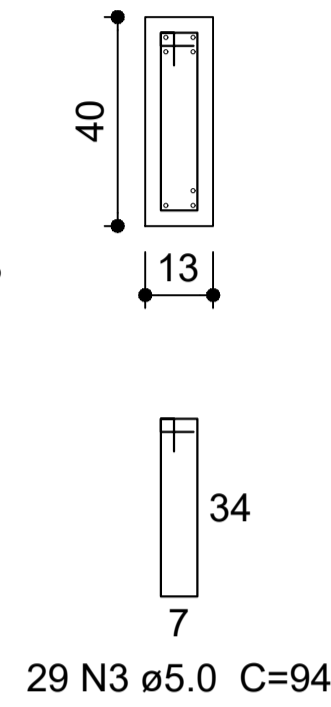


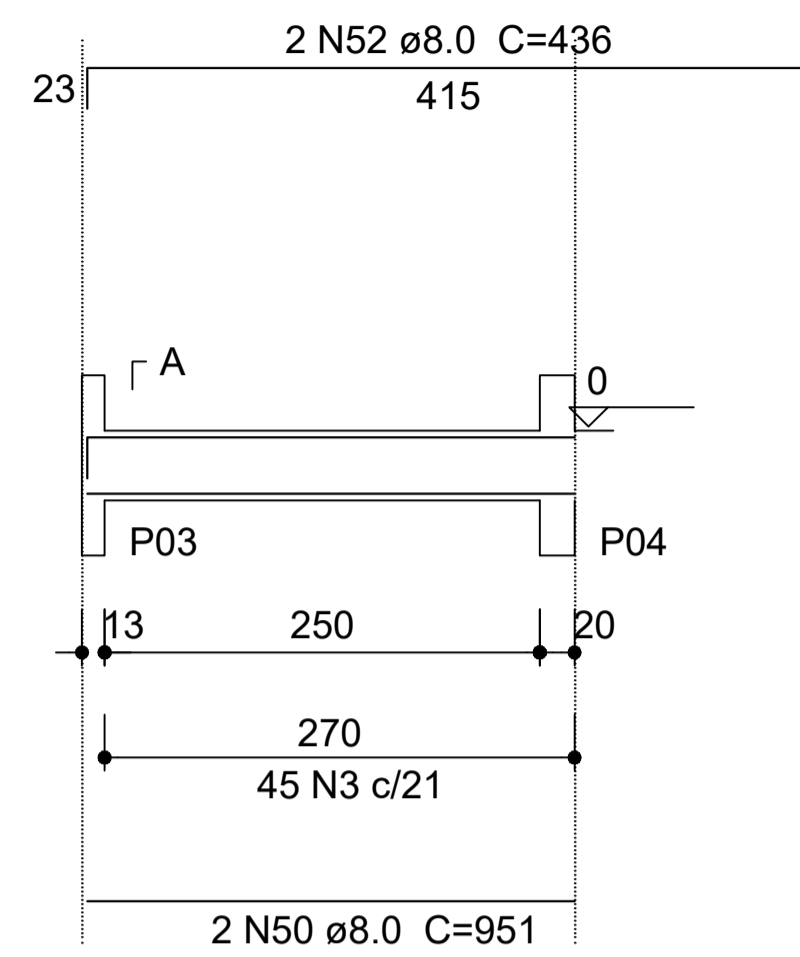
V22
ESC 1:75



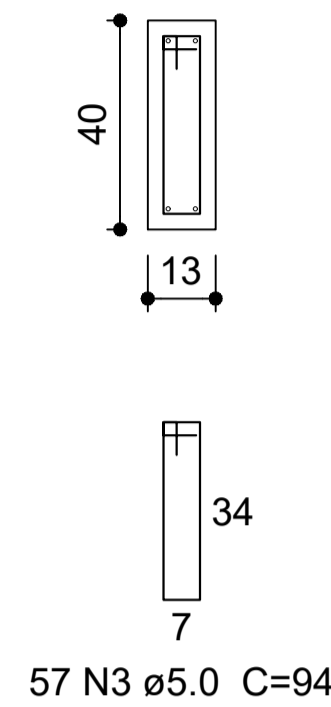
SEÇÃO A-A
ESC 1:25



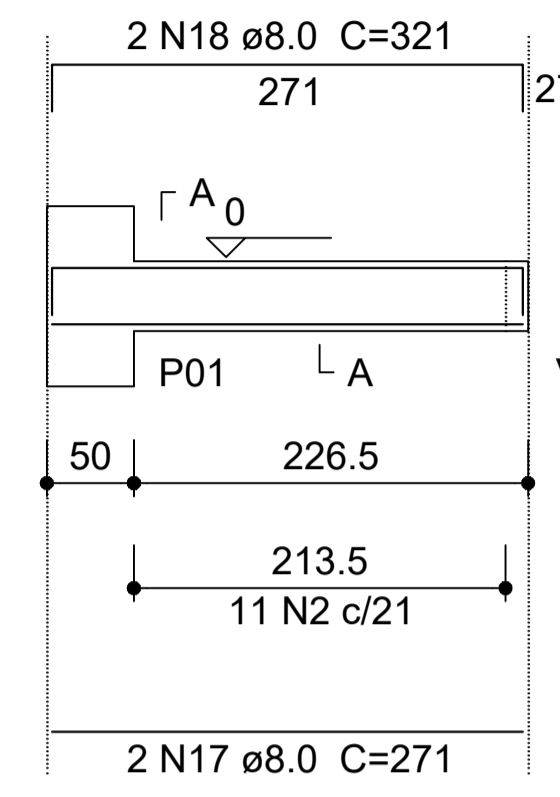
V23
ESC 1:75



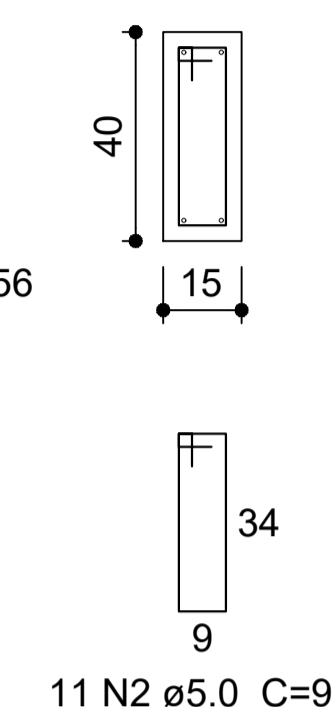
SEÇÃO A-A
ESC 1:25



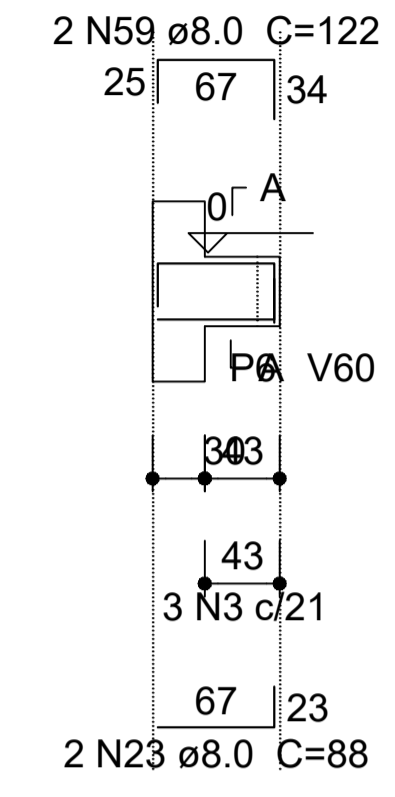
V25
ESC 1:75



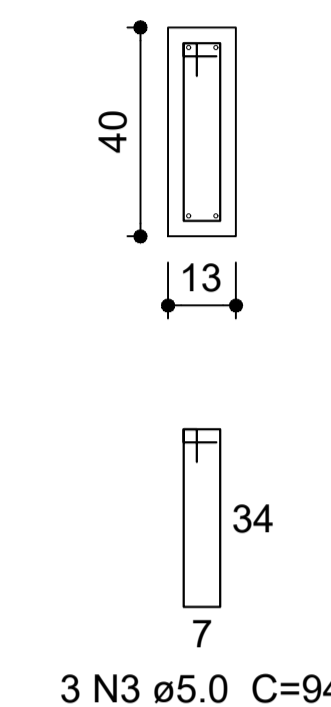
SEÇÃO A-A
ESC 1:25



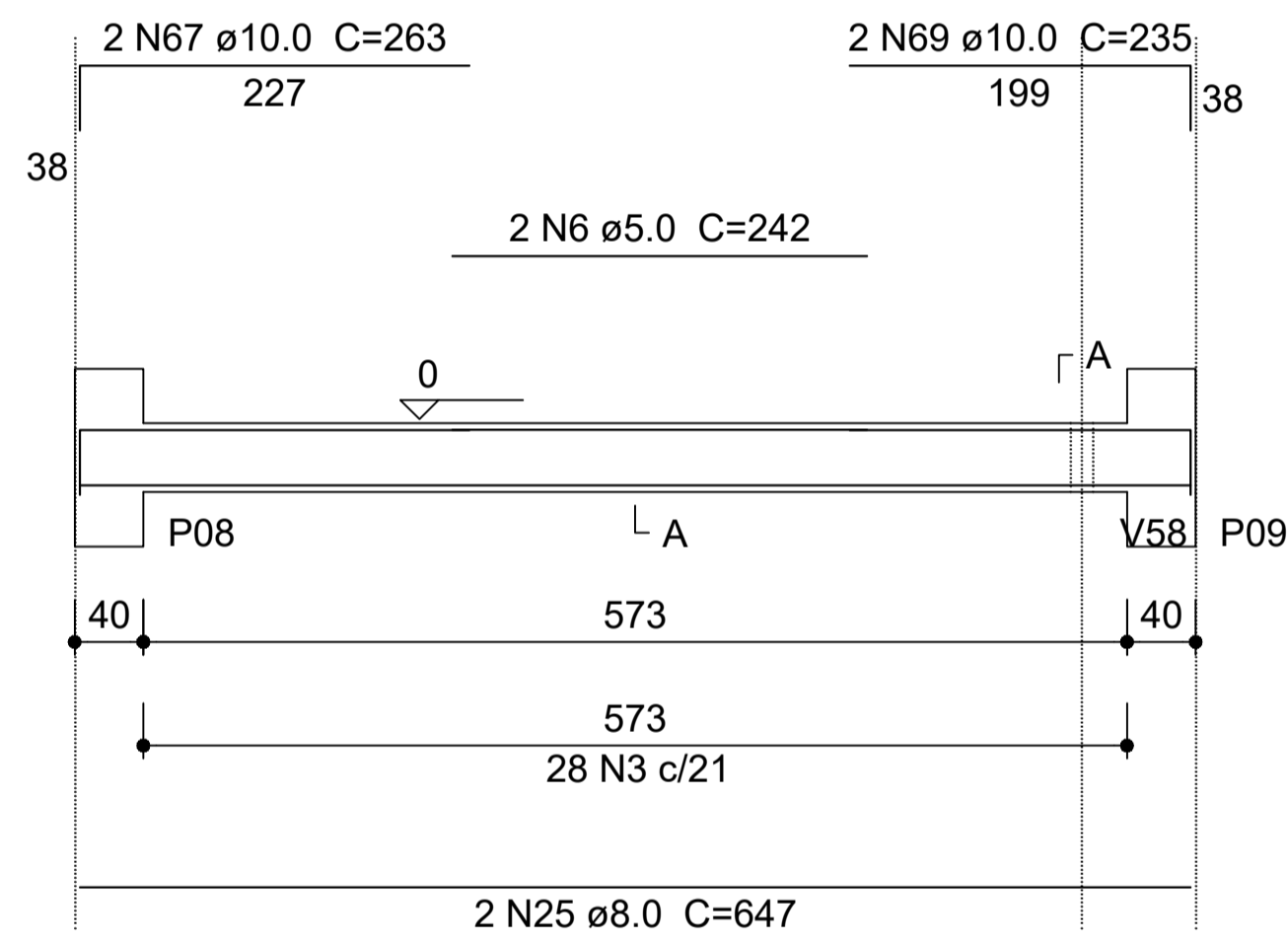
V28
ESC 1:75



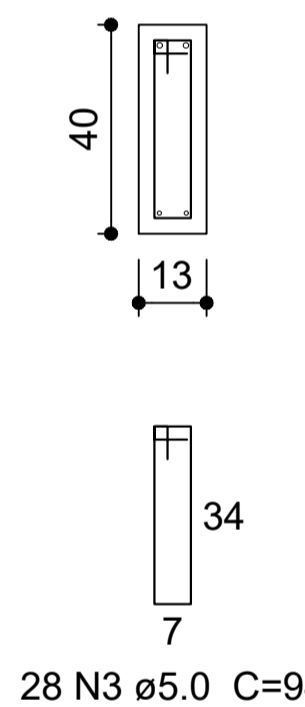
SEÇÃO A-A
ESC 1:25



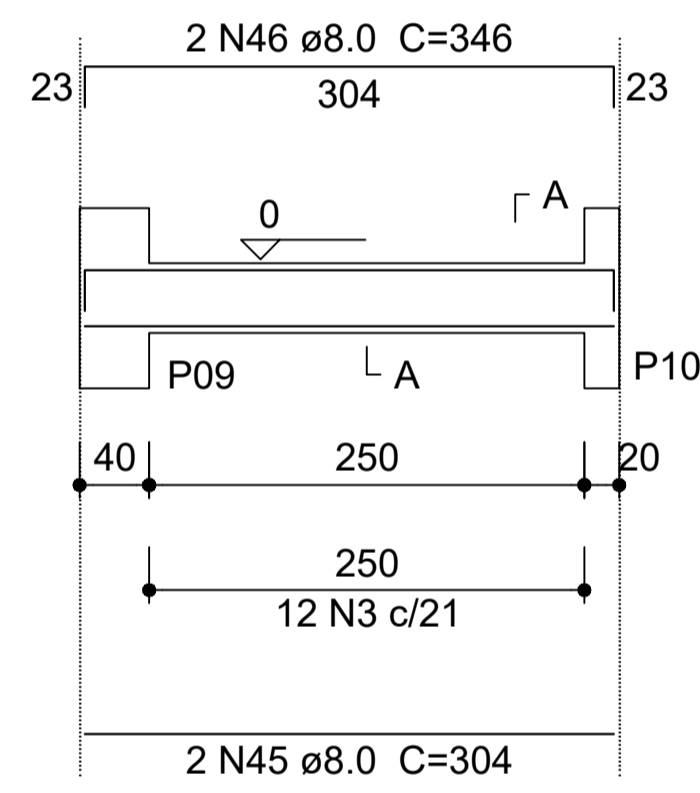
V30
ESC 1:75



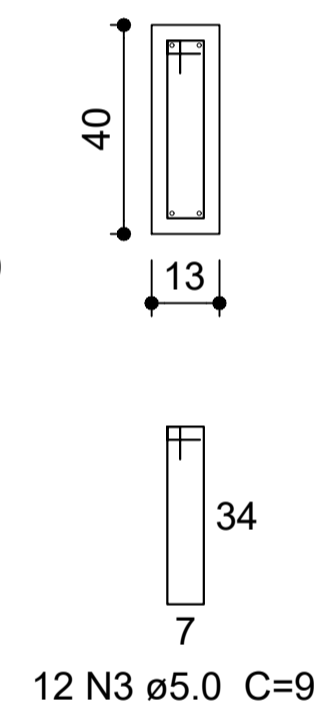
SEÇÃO A-A
ESC 1:25



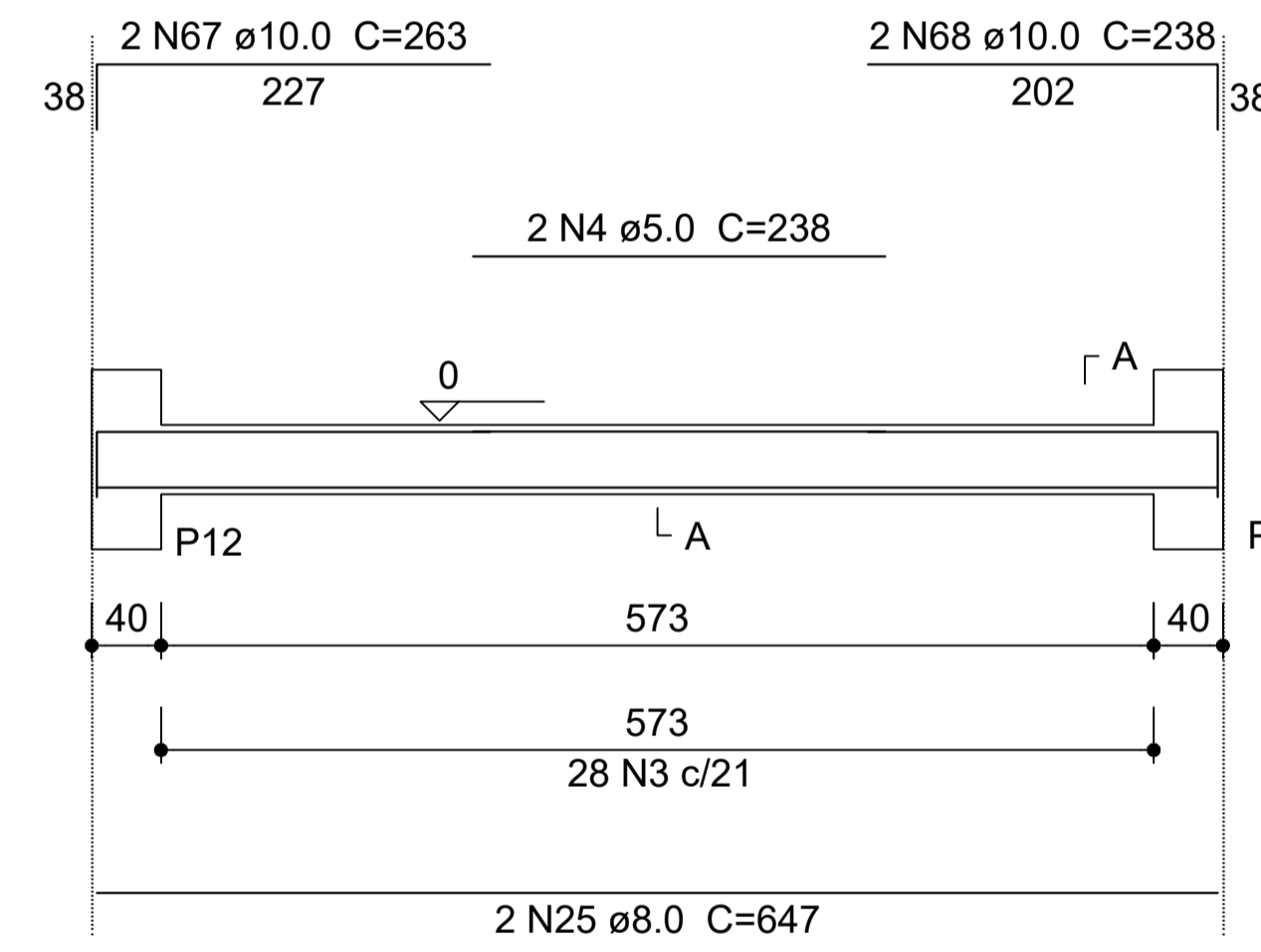
V31
ESC 1:75



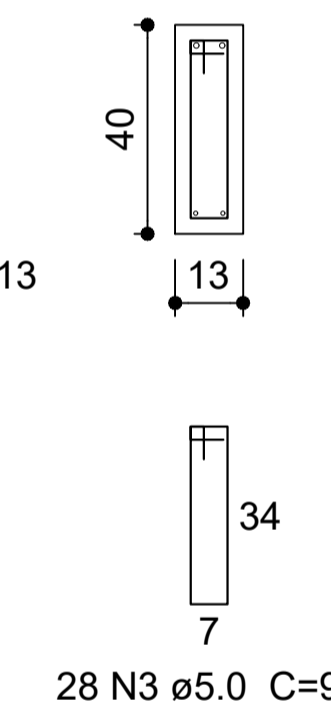
SEÇÃO A-A
ESC 1:25



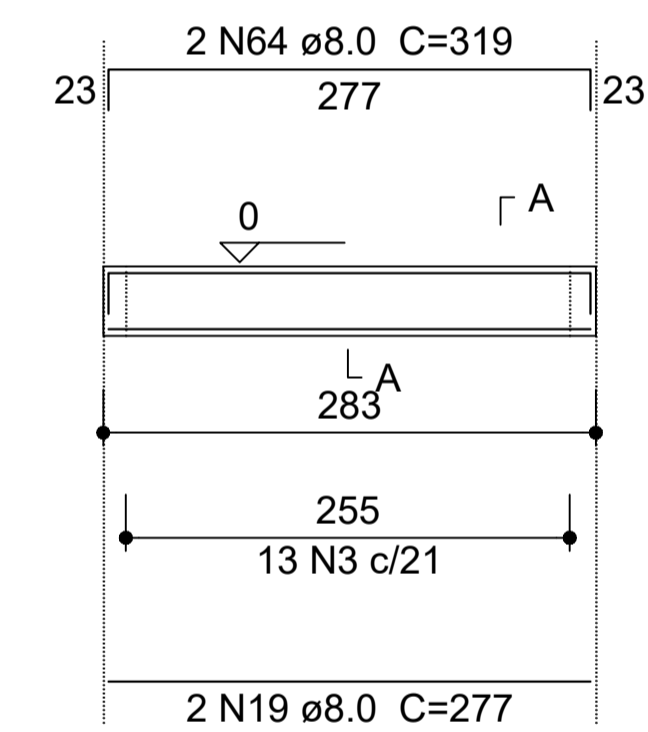
V35
ESC 1:75



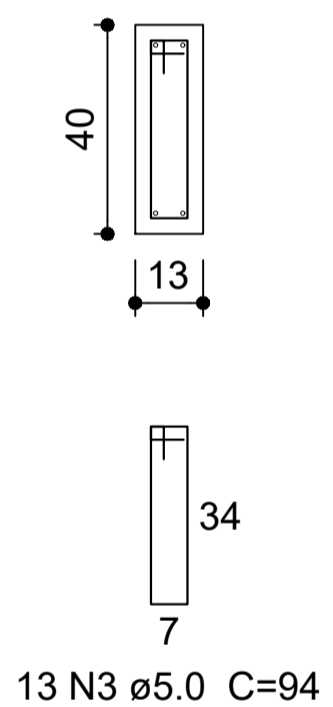
SEÇÃO A-A
ESC 1:25



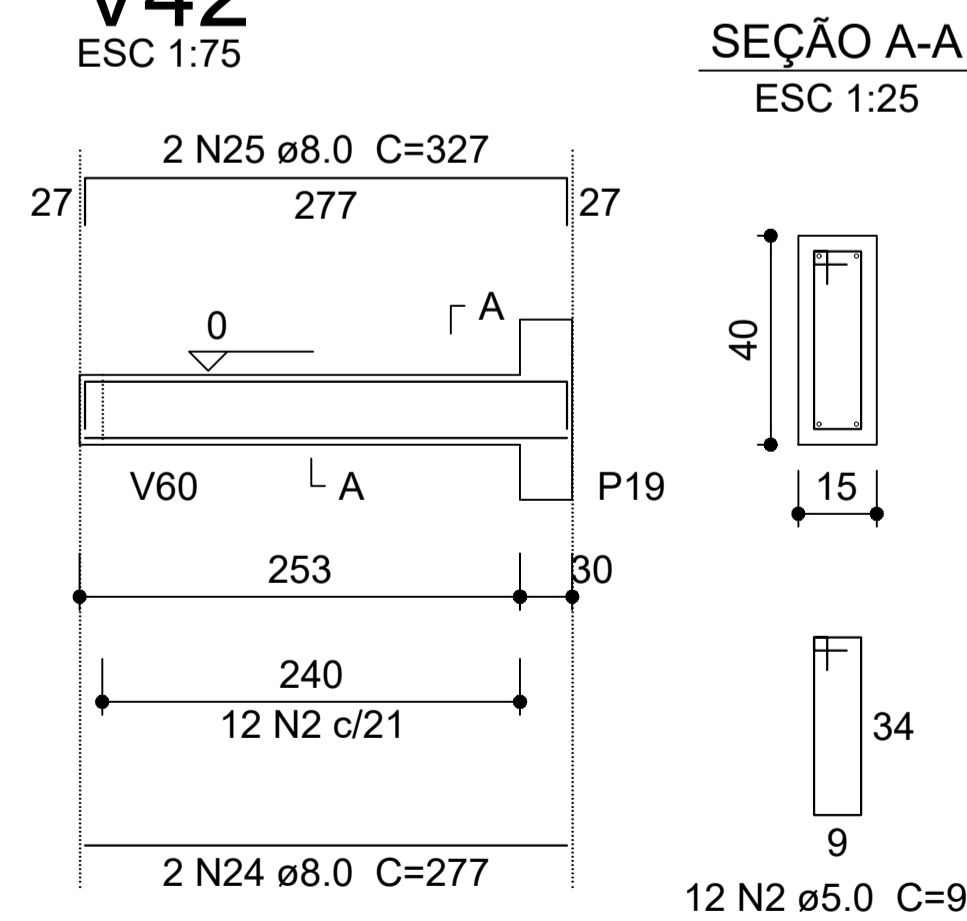
V38
ESC 1:75



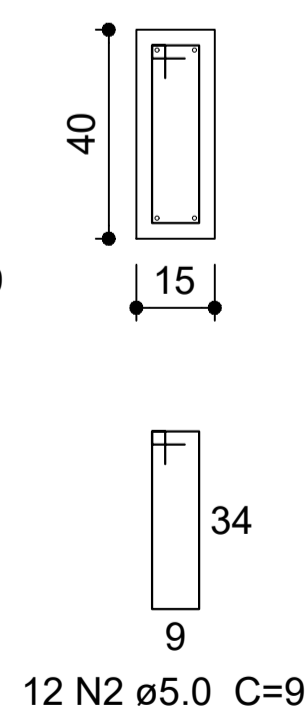
SEÇÃO A-A
ESC 1:25



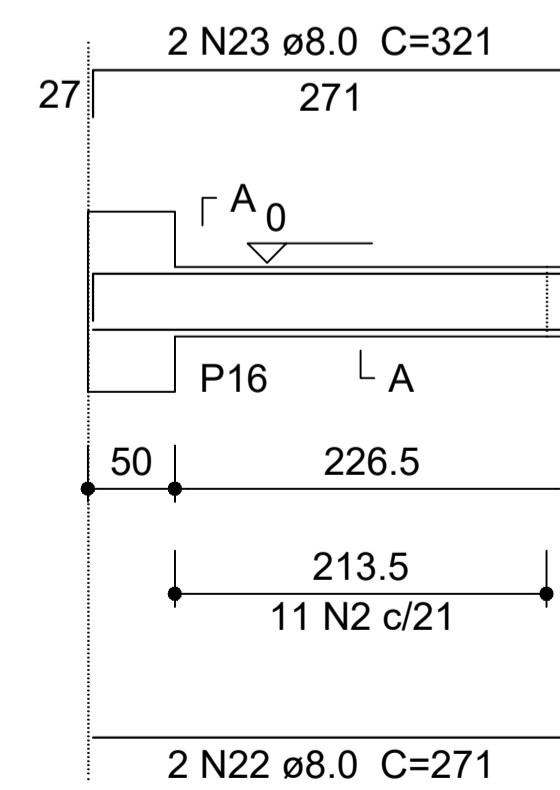
V42
ESC 1:75



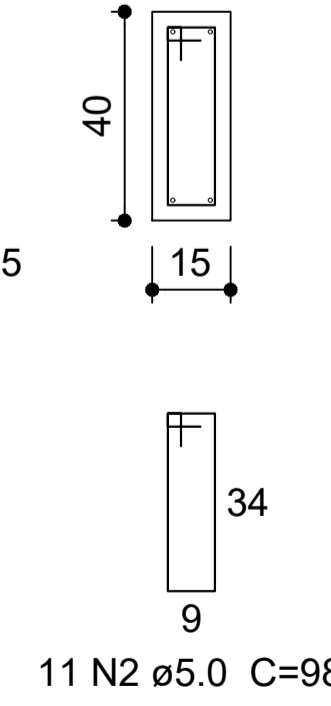
SEÇÃO A-A
ESC 1:25



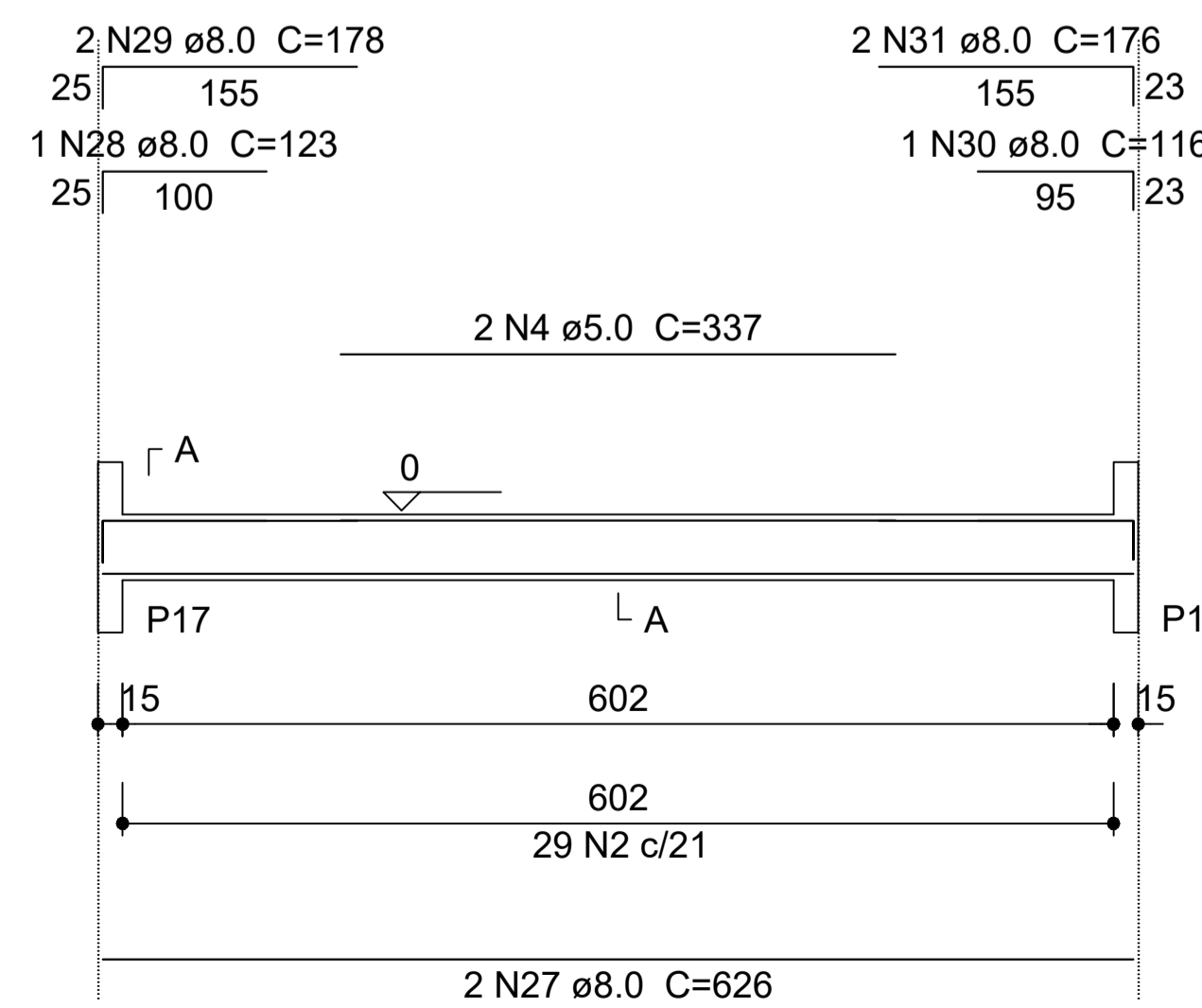
V41
ESC 1:75



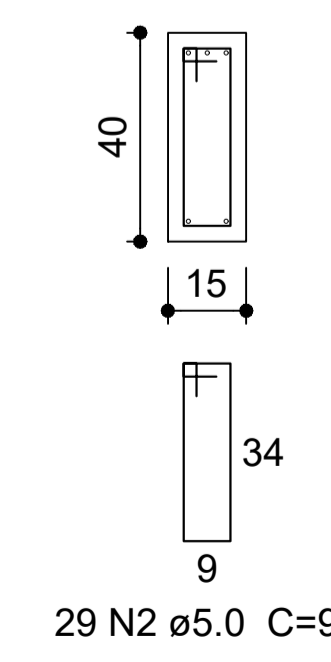
SEÇÃO A-A
ESC 1:25



V45
ESC 1:75



SEÇÃO A-A
ESC 1:25



Vigas Nível 000
escala 1:75

FONTE: PROJETOS PADRÃO FNDE.

APROVAÇÃO:		LOCAL: NOVA ESPERANÇA DO SUDOESTE - PR	
OBRA: AMPLIAÇÃO DE DUAS SALAS DE AULA NA CRECHE MUNICIPAL		DATA: AGOSTO/2022	
PROPRIETÁRIO: MUNICÍPIO NOVA ESPERANÇA DO SUDOESTE - ESTADO DO PARANÁ		ESCALA: INDICADA	
ENDEREÇO: LOTE Nº 62-A DA GLÉRIA Nº 24-PB RUA SEVERINA FRIZON RUARO	PROPRIETÁRIO:	ÁREA EXISTENTE: 774,08 M2	ÁREA AMPLIAÇÃO: 186,50 M2
PROJETO: VIGAS NÍVEL 000	ASSINATURA	PRANCHA: 05 / 08	
ESPÉCIE: ESTRUTURAL	RESPONSÁVEL TÉCNICO:		