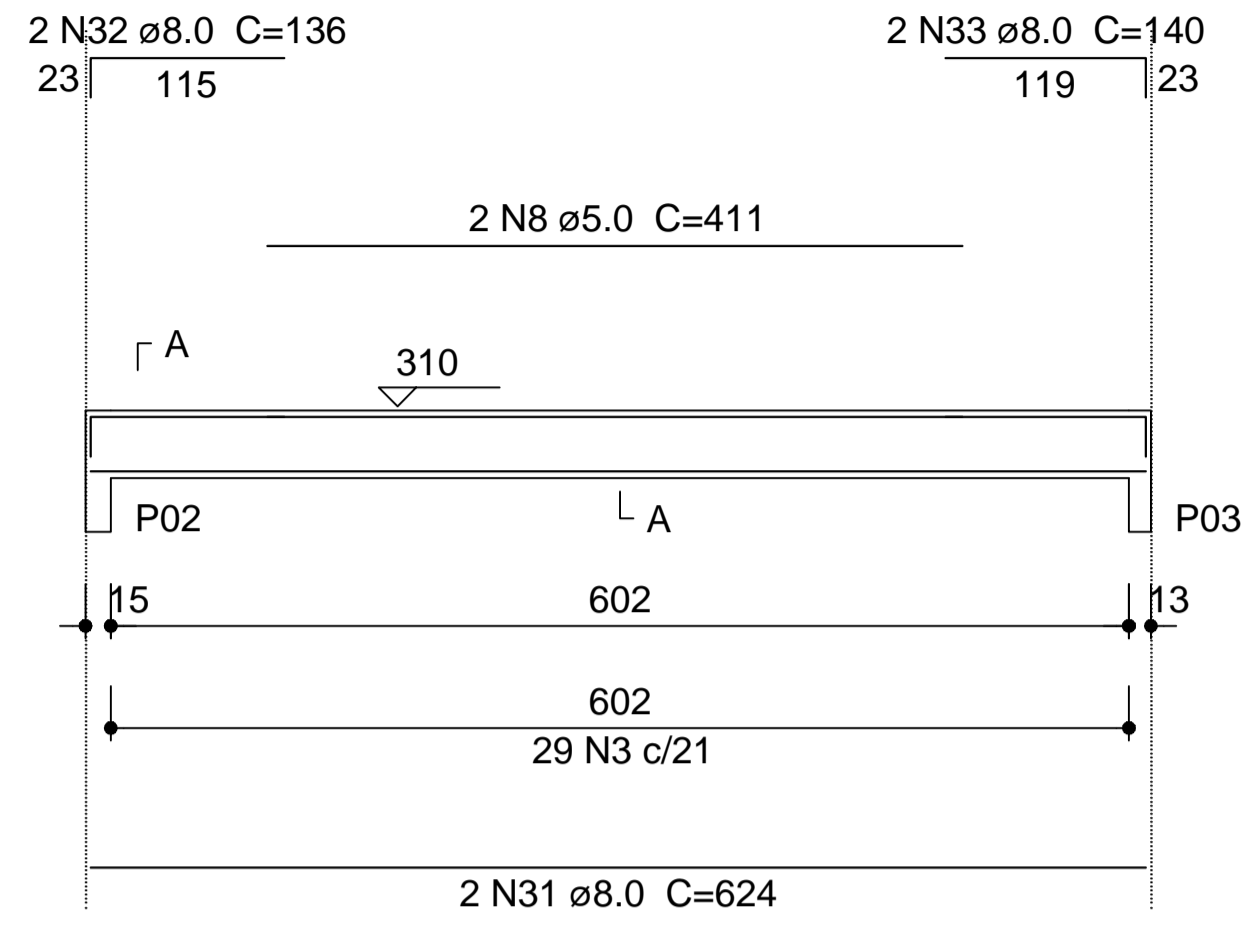


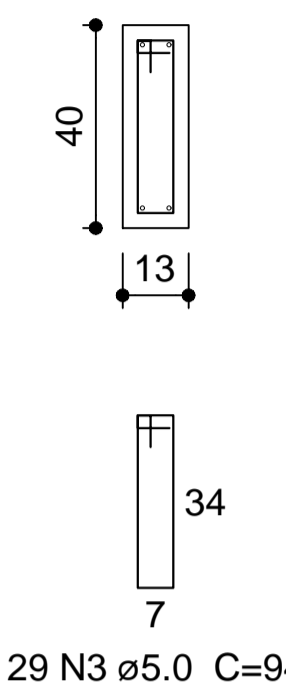
V19

ESC 1:75



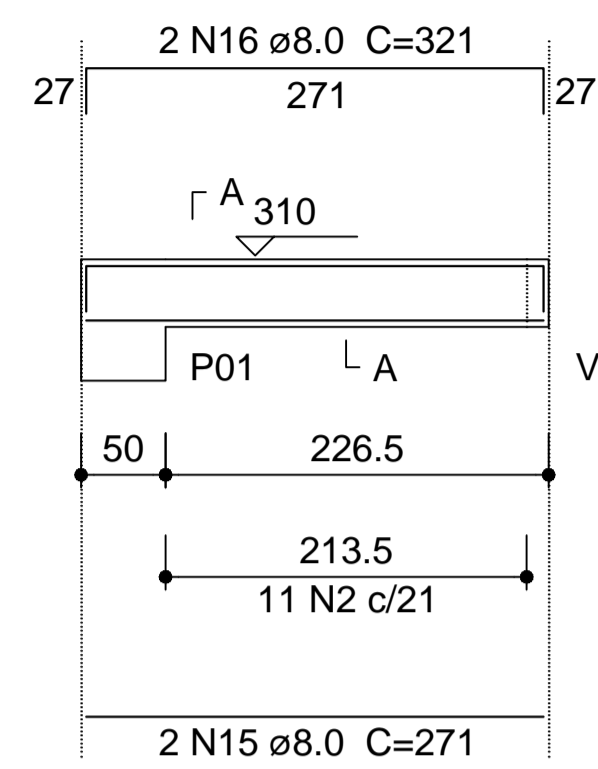
SEÇÃO A-A

ESC 1:25



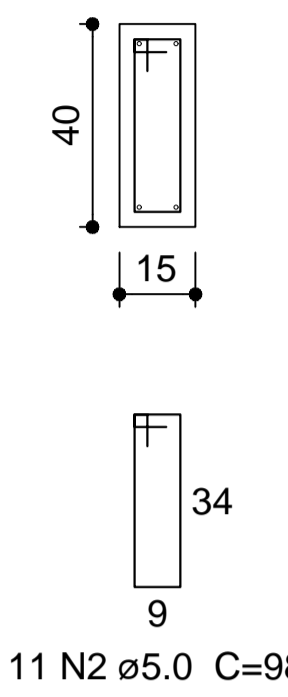
V21

ESC 1:75



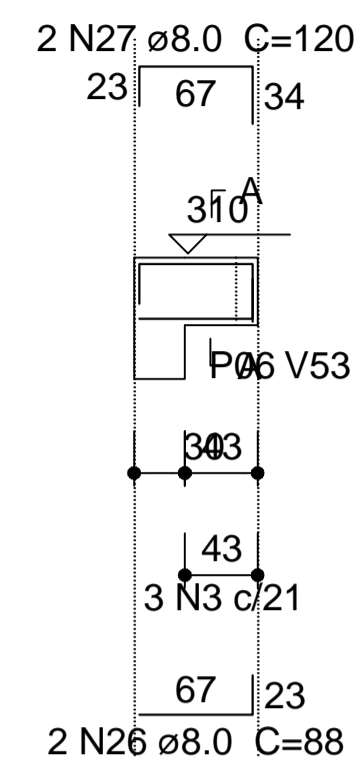
SEÇÃO A-A

ESC 1:25



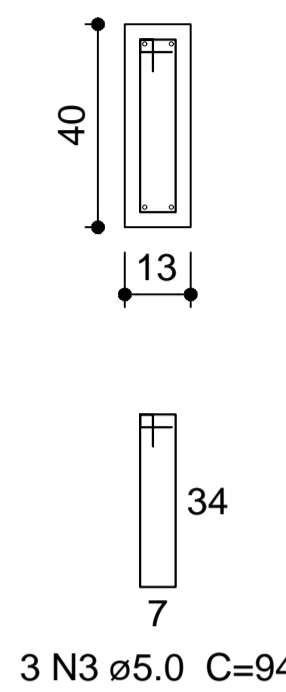
V24

ESC 1:75



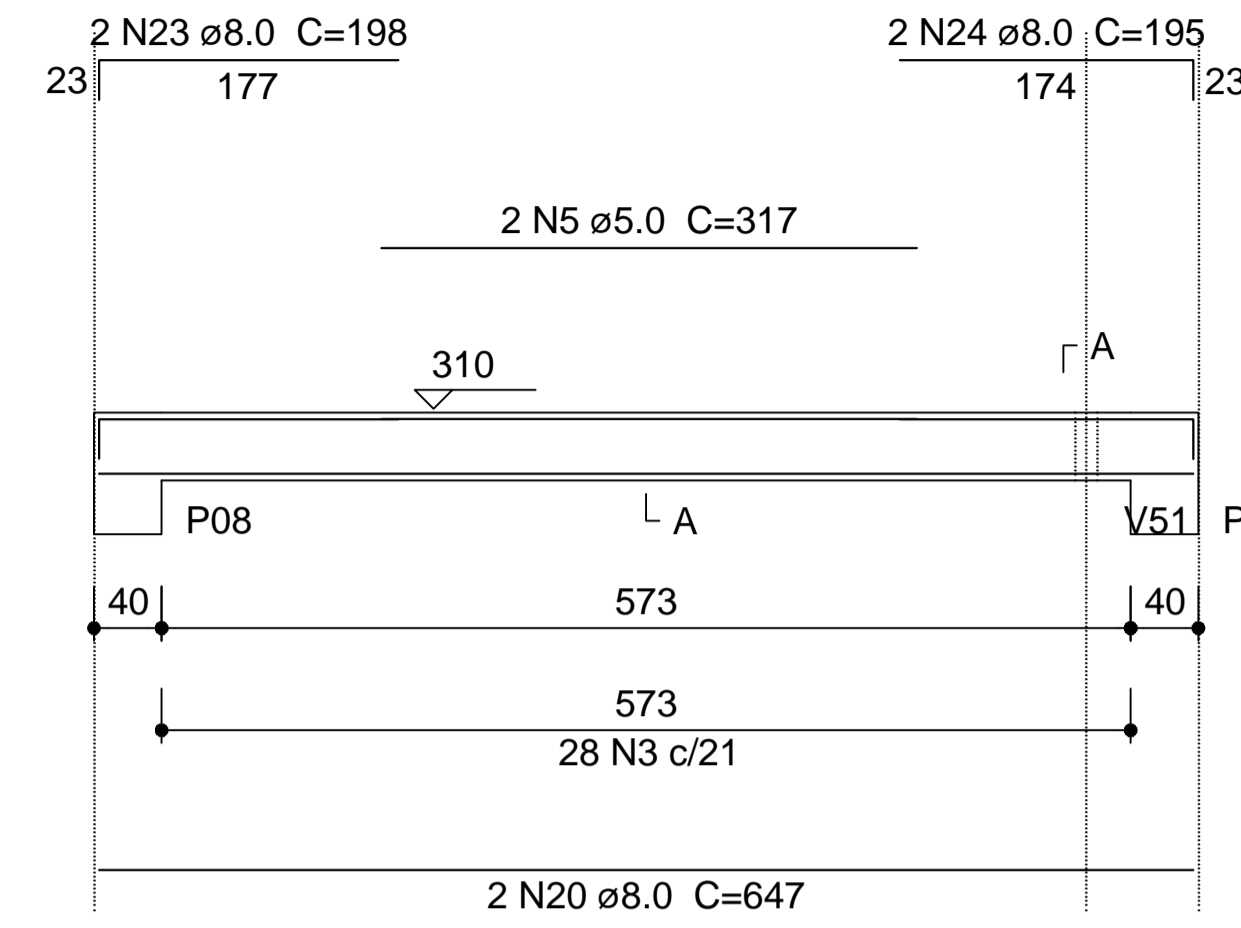
SEÇÃO A-A

ESC 1:25



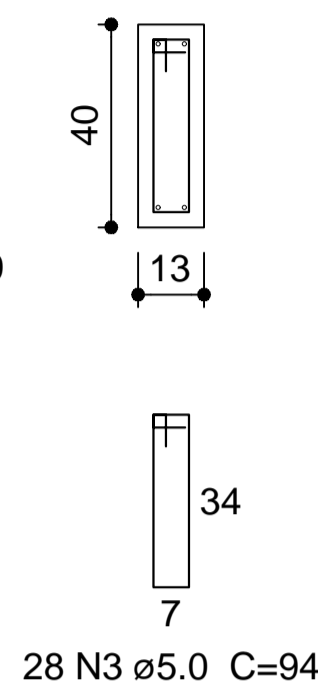
V26

ESC 1:75



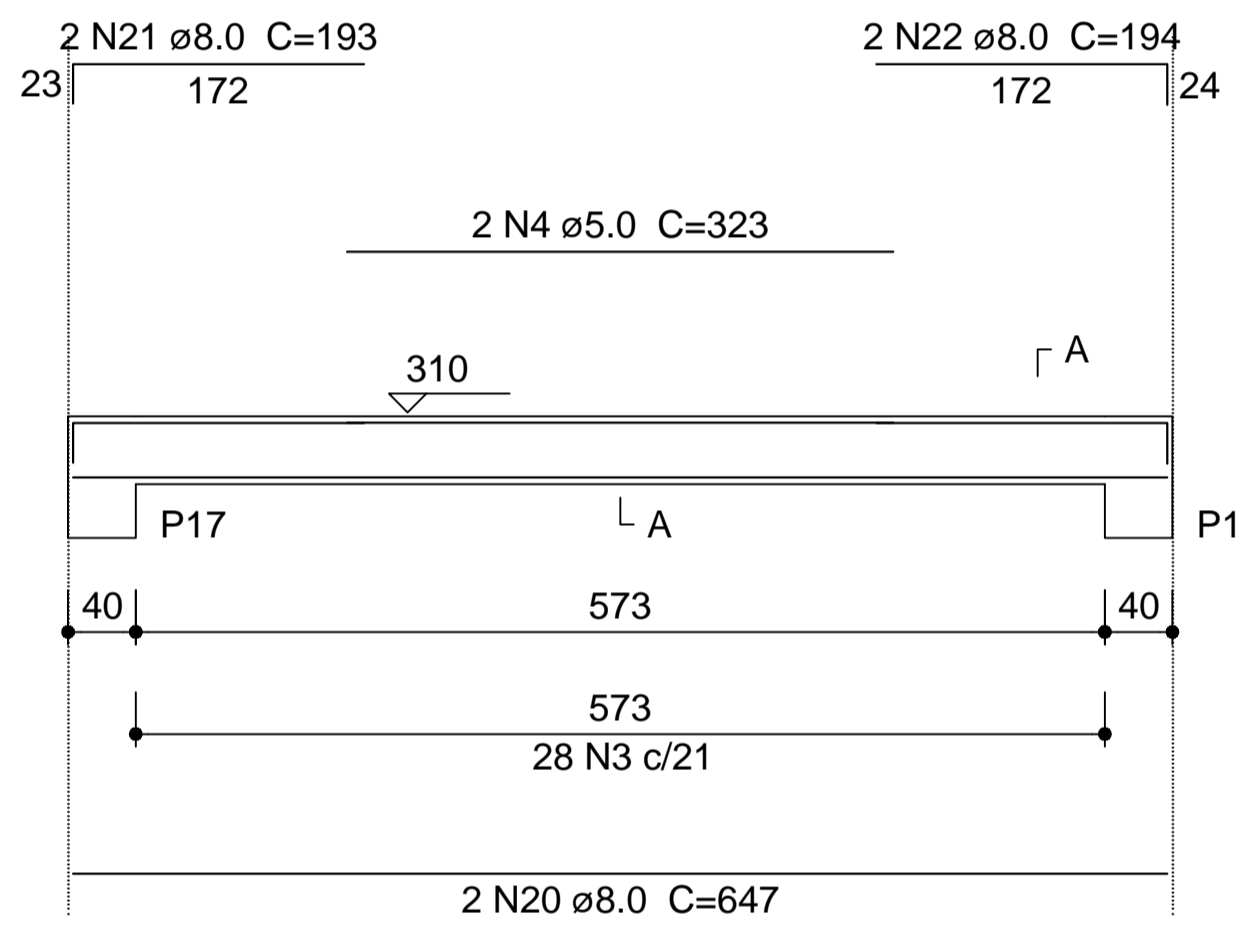
SEÇÃO A-A

ESC 1:25



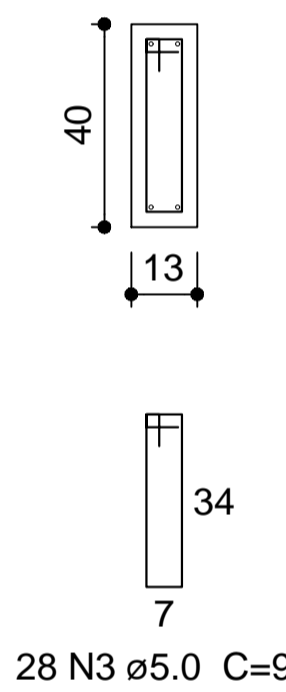
V28

ESC 1:75



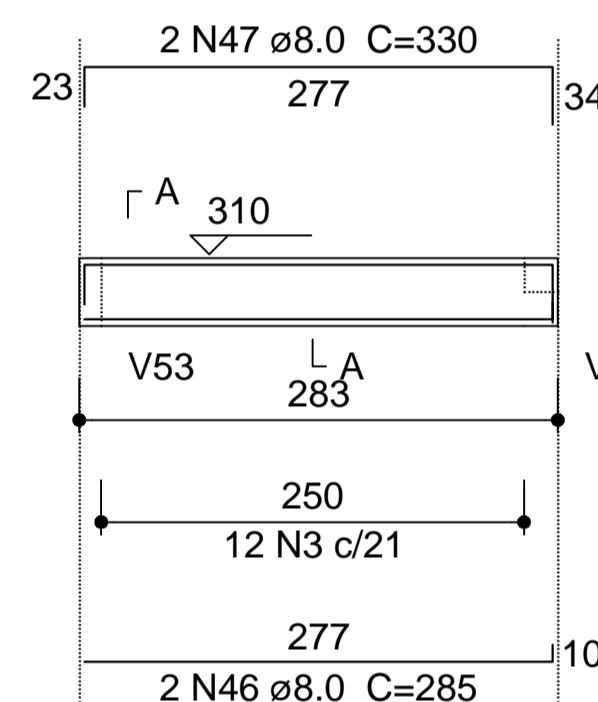
SEÇÃO A-A

ESC 1:25



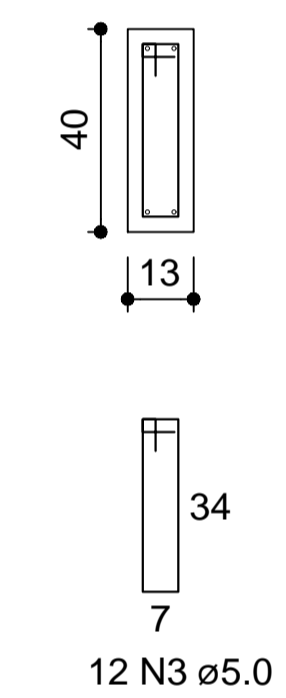
V31

ESC 1:75



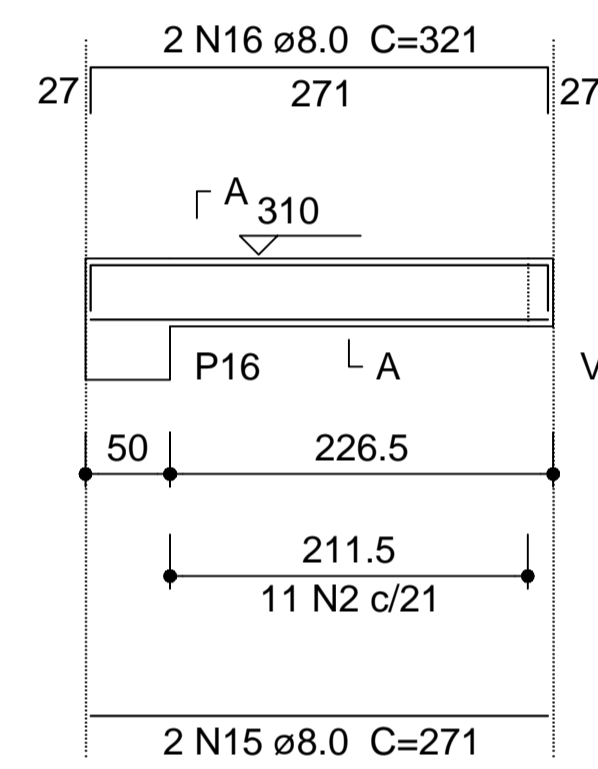
SEÇÃO A-A

ESC 1:25



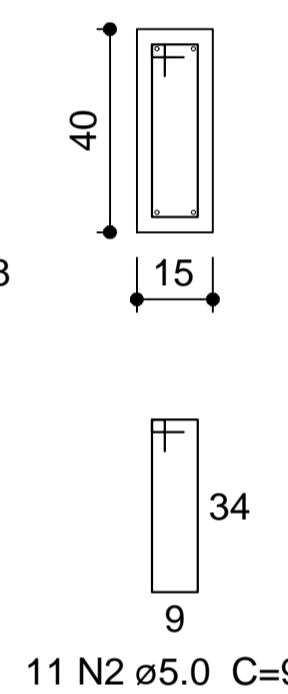
V34

ESC 1:75



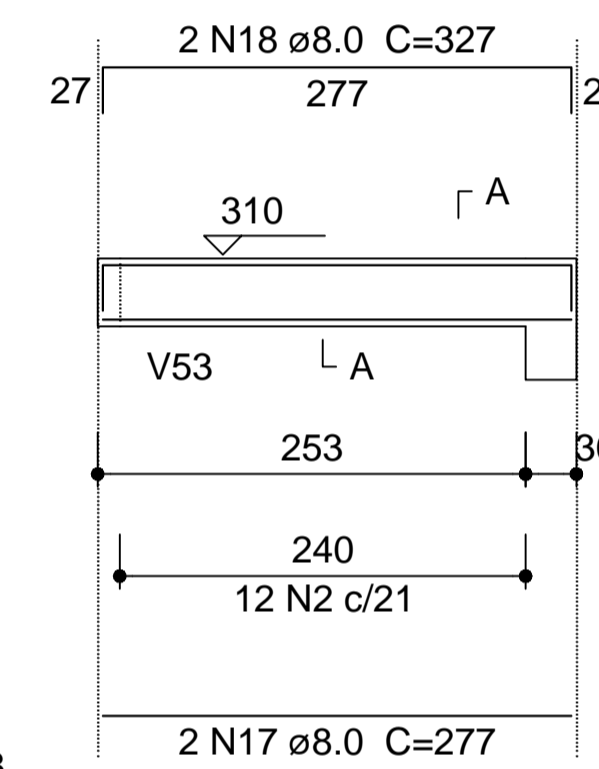
SEÇÃO A-A

ESC 1:25



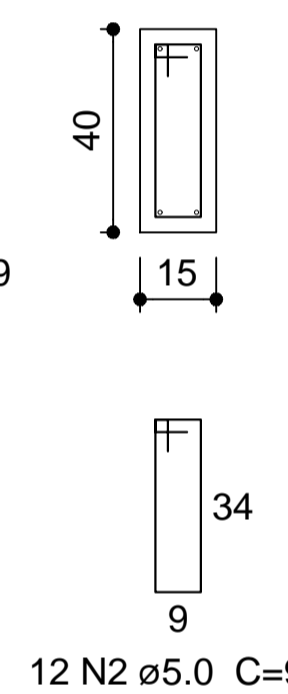
V35

ESC 1:75



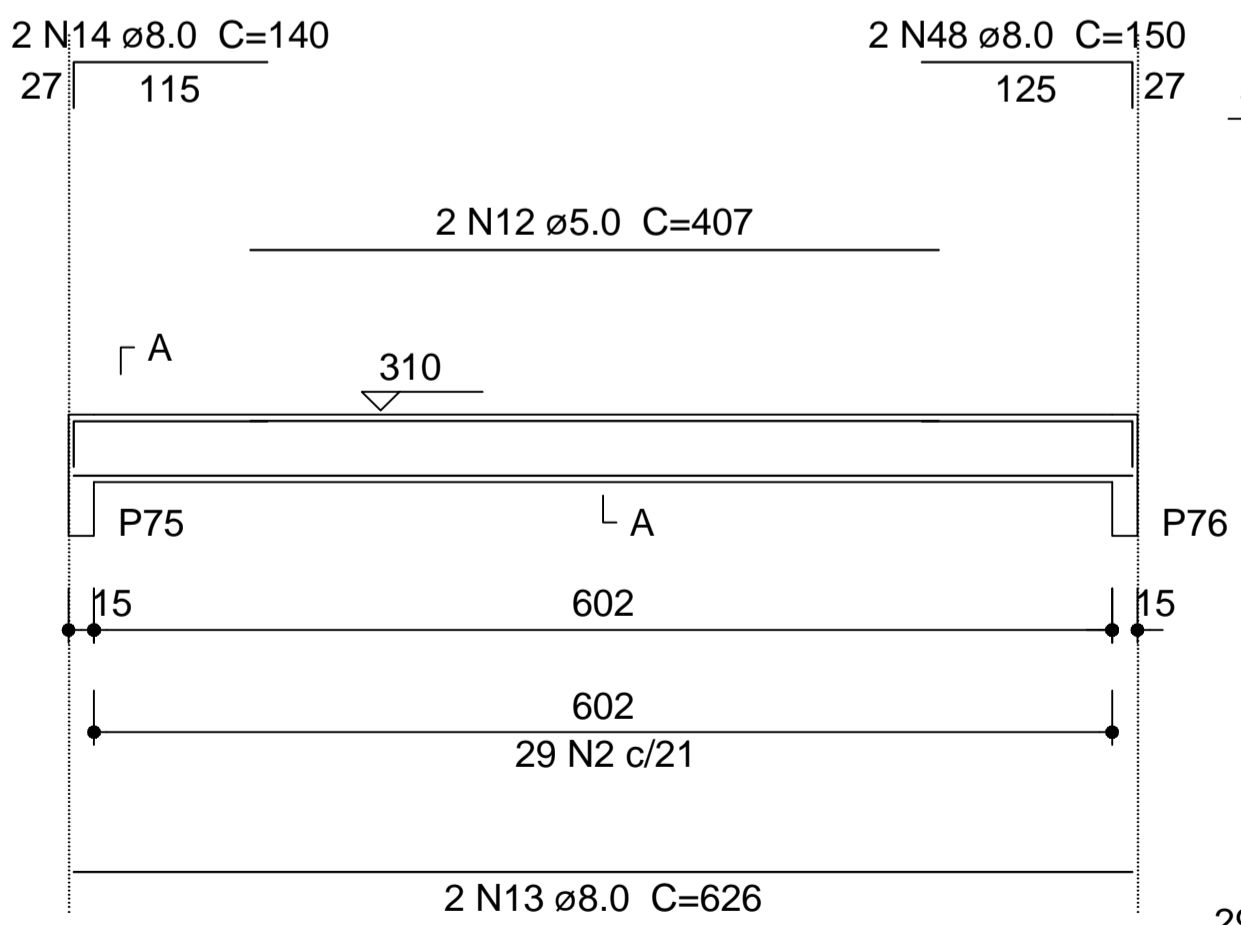
SEÇÃO A-A

ESC 1:25



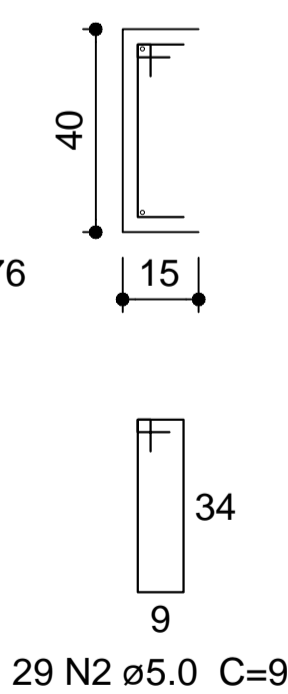
V38

ESC 1:75



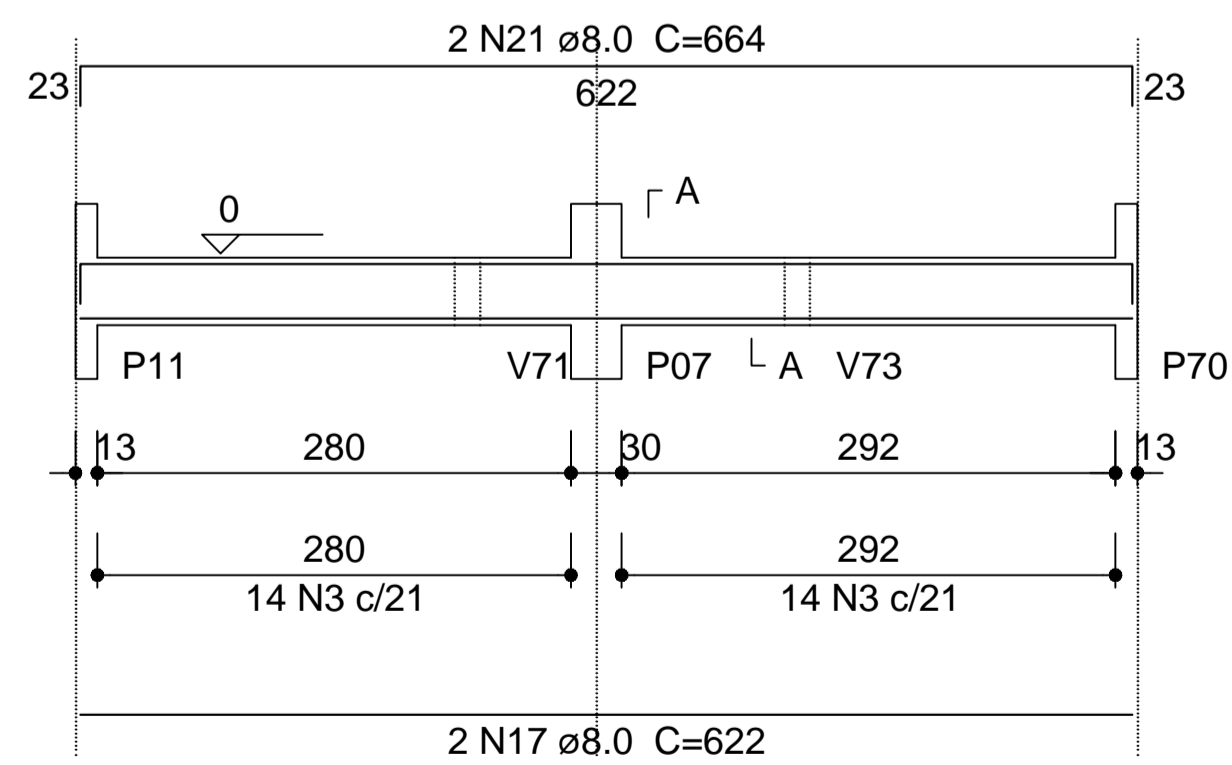
SEÇÃO A-A

ESC 1:25



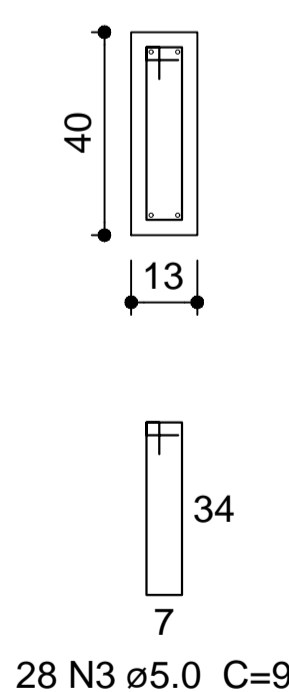
V40

ESC 1:75



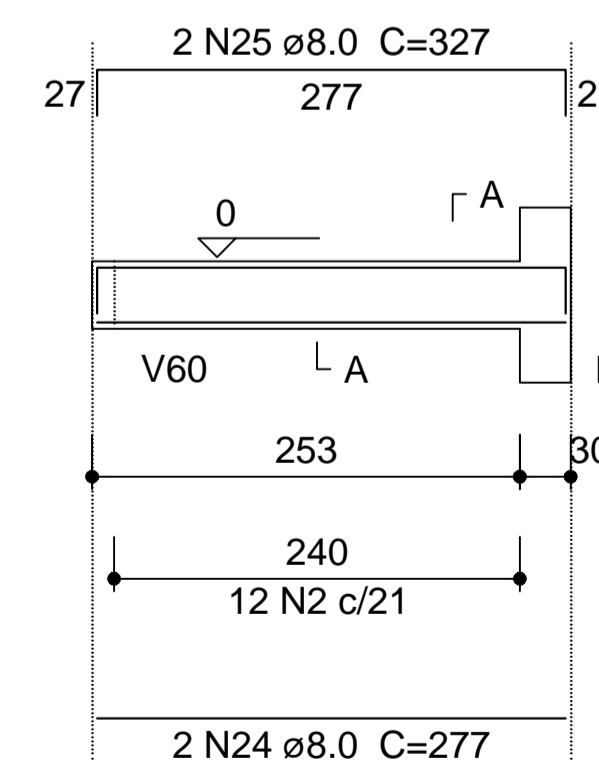
SEÇÃO A-A

ESC 1:25



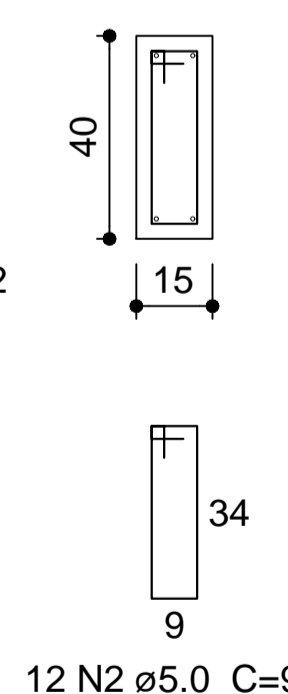
V42

ESC 1:75



SEÇÃO A-A

ESC 1:25



Vigas Nível 310
escala 1:75

FONTE: PROJETOS PADRÃO FNDE.

APROVAÇÃO:		LOCAL: NOVA ESPERANÇA DO SUDOESTE - PR	
OBRA: AMPLIAÇÃO DE DUAS SALAS DE AULA NA CRECHE MUNICIPAL		DATA: AGOSTO/2022	
PROPRIETÁRIO: MUNICÍPIO NOVA ESPERANÇA DO SUDOESTE - ESTADO DO PARANÁ		ESCALA: INDICADA	
ENDEREÇO: LOTE Nº 62-A DA GLEBA Nº 24-FB RUA SEVERINA FRIZON RUARO		ÁREA EXISTENTE: 774,08 M ²	
PROJETO: VIGAS NÍVEL 310		ÁREA AMPLIAÇÃO: 186,50 M ²	
ESPÉCIE: ESTRUTURAL		FRANCHA: 07 / 08	